

Cobra

IP68 Recessed LED Fixture

Description

The Cobra LED fixture is an Australian made IP68 submersible LED light fitting. Sturdy and reliable in a 316 stainless frame, the Cobra is suitable for recessed in ground, ceiling and wall applications. Fitted with high output superior LED's and optics, the Cobra is resistant to pedestrian traffic and permanently submersible in water.



Specifications

VERSIONS

- 1w Fixed Colour
- 3w Fixed Colour
- 1w RGB Colourmixing
- 3w RGB Colourmixing

BEAM SPREAD

- Narrow 10°
- Narrow 12°
- Elliptical 6° x 24°
- Medium 22°
- Wide 56°

FINISH

- Stainless Steel (316 Marine Grade)
- Aluminium Version Available

WEIGHT

- Stainless - 205g
- Aluminium - 110g

LENS

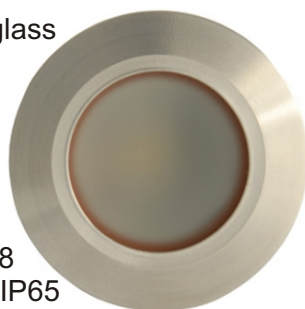
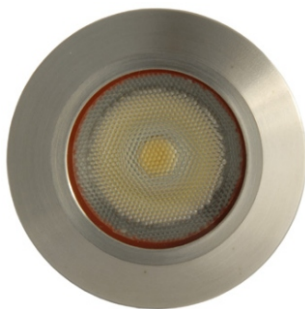
- Exterior*
 - Flat 6mm Toughened glass
 - Frosted Dome Glass
- Interior*
 - Flat Acrylic
 - Frosted Dome Glass

RATING

- Exterior Flat Glass - IP68
- Exterior Domed Glass - IP65
- Interior (All Versions) - IP40

PROTECTION

- On board thermal management



COLOURS

- Warm White (W3 - 3200K)
- Cool White (W5 - 5500K)
- Royal Blue (B)
- Red (R)
- Amber (A)
- Green (G)
- RGB (RGB)

MOUNTING

- Exterior*
 - By structural adhesive to 38mm hole or 40mm OD PVC conduit
- Interior*
 - Spring clips and adaptors available for sheet material

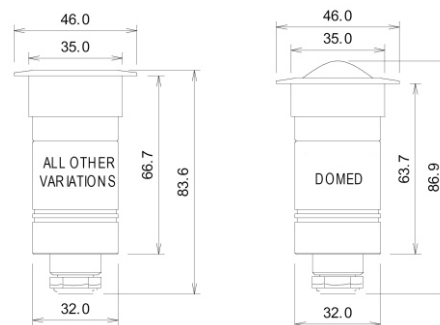
VOLTAGE

- Fixed Colour Versions - 9 to 28V 50/60Hz AC
- RGB Versions - 24VDC
- *Not to be used with high frequency halogen electronic transformers.

TEMPERATURE

- 10° to 45° Centigrade

SIZE



Note—Specifications subject to upgrades and/or changes without notice

fibre optic • led lighting • architectural • stage/dance • special effects

lighttech®
Australia Pty Ltd

freecall 1800 950 888
info@lighttech.com.au
www.lighttech.com.au